

2024

BEECHWOOD

Sts. Peter and Paul
Melkite Catholic Church Package



280, av. Beechwood Ave., Ottawa - 613-741-9530 -
www.beechwoodottawa.ca



Beechwood, Funeral, Cemetery and Cremation Services is owned by the Beechwood Cemetery Foundation and operated by The Beechwood Cemetery Company

FE-1071 - Funeral Establishment Operator - Class 1 - CR-02946 - Crematorium Operator - CM-02946 - Cemetery Operator

Established in 1873, Beechwood is recognized as one of the most beautiful and historic cemeteries in Canada; designated as a National Historic Site.

It is the final resting place for over 85,000 Canadians. Beechwood is proud to be the home of the National Military Cemetery, the RCMP National Memorial Cemetery and the Ottawa Police Service Memorial Cemetery. Beechwood has served all cultures and faiths with care and compassion and is proud to have sections designed to meet the interment needs of the Chinese, Egyptian, Greek, Lebanese, Latvian, Muslim, Polish, Portuguese, Ukrainian and Vietnamese communities.



BEECHWOOD'S MISSION STATEMENT:

“Beechwood, operating on a not-for-profit basis, will be governed efficiently and effectively in the spirit of public service for our community and our nation. Beechwood will ensure that, both at time of need and in perpetuity, it will be operated and maintained in the highest order in memory, honour and respect of those who have left this world before us.”

*Care and Maintenance Fund Contribution

Land:

As required under the Funeral, Burial and Cremation Services Act, 2002 and Ontario Regulation 30/11, the amounts below will be contributed to an irrevocable trust fund known as the Care and Maintenance Fund. Income (interest) from this fund is used to cover care and maintenance expenses of the cemetery in perpetuity.

For one in-ground grave, 2.23m ² /24ft ² or larger	40% (or minimum \$290)
For one child or cremation grave, smaller than 2.23m ² /24ft ²	40% (or minimum \$175)
For one columbarium niche	15% (or minimum \$165)
For one mausoleum crypt	20% (or minimum \$830)
	<i>(of the purchase price)</i>

Cemetery Services

Weekday Interment Fees (opening and closing of grave)

Interment of an adult at standard depth	\$1580.00
Interment of an adult at extra depth	\$1940.00

Saturday Interment Fees (opening and closing of grave)

Interment of an adult at standard depth	\$2230.00
Interment of an adult at extra depth	\$2590.00

Weekday Cremated Remains Disposition Fees

Interment of cremated remains (April 1 - December 31)	\$850.00
Interment of cremated remains (January 1 - March 31)	\$1190.00
Inurnment of cremated remains in a columbarium niche	\$675.00

Saturday Cremated Remains Disposition Fees

Interment of cremated remains (April 1 - December 31)	\$1500.00
Interment of cremated remains (January 1 - March 31)	\$1840.00
Inurnment of cremated remains in a columbarium niche	\$1325.00

Weekday Entombment Fees - Mausoleum Crypts

Entombment in a mausoleum crypt	\$1370.00
---------------------------------	-----------

Saturday Entombment Fees - Mausoleum Crypts

Entombment in a mausoleum crypt	\$2020.00
---------------------------------	-----------

*Excludes The Bereavement Authority of Ontario Consumer Protection Fee - \$30.00 (the fee is applied to EACH service)

The Bereavement Authority of Ontario Fee is charged by the BAO in order to provide its services of information on your options in bereavement services and to regulate the profession making sure the law is consistently followed. Should you have any questions, please visit <https://thebao.ca/>

Care and Maintenance Fund Contribution - Memorials:

As required under the Funeral, Burial and Cremation Services Act, 2002, the following amounts must be paid to the cemetery operator before a marker is installed. After each marker installation, the amount will be contributed to an irrevocable trust fund known as the Care and Maintenance Fund. Interest from the fund will be used to cover expenses for the care and maintenance of markers and monuments in perpetuity.

For flat markers measuring less than 1,116.13cm ² / 173in ²	\$0
For flat markers measuring 1,116.13cm ² / 173in ² or larger	\$100
For upright monuments 1.22m / 4ft or less in height and 1.22m / 4ft or less in length, including base	\$200
For upright monuments more than 1.22m / 4ft in height and 1.22m / 4ft, including base	\$400

Payment, Financing and Funding

For services at time of death:

Payment is due within 30 days of signing the contract, beyond which interest will be charged at a rate of 1 %, which is equivalent to 18% per annum (APR). Payment may be made by cash, cheque, debit, e-transfer, MasterCard and Visa. Payment plans are available through a third-party credit union. Financing charges apply to payment plans.

Financial assistance for burial and cremation services is available through various governmental agencies, to those who qualify.

Pre-payment in advance of need:

For services and supplies that are being arranged pre-need, you may pay for the services and supplies at today's price. Pre-paid funds for services will be placed in a trust account, where it will accrue interest until the prepaid contract is fulfilled (when the services and supplies are delivered). Pre-payment can be made by cash, cheque or credit. Funds are held in the purchaser's name.

Guarantee: When paid in full in accordance with the payment terms set out in the prepaid contract, the prepaid contract is guaranteed. The total payment(s) made plus interest / growth earned will be applied to the future price of the services and supplies. If the total payment(s) plus interest / growth earned are insufficient to cover the total future price of the prepaid services and supplies, we will absorb the difference as a loss. Any funds in excess of the total future price of the prepaid services and supplies will be returned or applied toward additional services, supplies and disbursements purchased at the time of need, as applicable. Conditions apply. Any changes to the prepaid contract may result in the prepaid contract being null and void and a new contract being executed with current pricing at the time changes are made.

Additional information about payment, financing and funding options is available upon request.

The story of Beechwood is the story of our country

The story of Beechwood Cemetery is the story of Canada, in all its diversity of colour, religion and culture. “Whenever I enter a cemetery,” former governor general Michaëlle Jean once said, “I feel as though I am opening the door to a library. Every tombstone is a book; every person at rest, a story.”

From its French and English roots, Beechwood’s story spans the Scots and Irish with their Celtic crosses to influxes of Chinese, Vietnamese, Portuguese and East European migrations and more recent memorials bearing Arabic and other scripts. Beechwood tells 85,000 stories spanning over 144 years and 160 acres. More than a cemetery, its memorials and tombstones describe a country that grew and matured, a country whose diversity and tolerance became pillars of pride and strength.

Beechwood had humble beginnings as a cemetery open to all faiths, which was built outside the old city boundaries. At the time, a council decree banned cemeteries from within the city due to fears that burial grounds harboured deadly diseases such as cholera, typhoid and smallpox.

It was the first cemetery in Ottawa to provide the Chinese community with its own distinct burial ground, in 1903. With a traditional Chinese pagoda honouring the community’s ancestors, Beechwood has since become the final resting place for waves of Asian immigrants, including those from Vietnam. Beechwood opened its gates to European communities before, during and after the Second World War, as well as those from East Europe escaping Cold War communism, and to Italians, Greeks, Portuguese and others seeking new lives in the New World.

Various parishes have established sections in the cemetery, including St. George and St. Anthony Orthodox Church, Virgin Mary Greek Orthodox Church, St. Charbel Maronite Church, St. Elias Antiochian Orthodox Cathedral, Sts. Peter and Paul Melkite Catholic Church and St. John the Baptist Ukrainian Catholic Shrine. Special monuments have been erected to the Protestant Ophans’ Home, Protestant Home for the Aged, the Home for Friendless Women, the Canadians who perished in the 9/11 attacks, even the Marxist-Leninist Party of Canada.

In the Portuguese section, established in 1997, there is a statue of Our Lady of Fátima, based on the apparition that appeared before three shepherd children in Portugal in 1917. Rosaries are draped on the Virgin Mary’s wrists for her blessing.

In more recent years, refugees and immigrants have come from Africa and the Middle East, escaping tyranny and oppression in countries like Iraq and Syria, Somalia and Nigeria. In 2008, the Ottawa Muslim Association and Beechwood Cemetery signed an agreement under which a section was set aside to meet the religious, cultural and interment needs of the Muslim community, including an ablution room.

The stones at Beechwood bear inscriptions in dozens of languages, while staff at Beechwood can provide service in seven. “Almost since its inception, that was the idea,” says Nicolas McCarthy, Beechwood’s director of marketing, communications and community outreach. Once Beechwood started to grow, he says, “the caretakers who ran and who currently run Beechwood have always kept inclusion in mind, perhaps knowing the importance it would hold as Canada’s National Cemetery and the need to include all cultures.” Further to that end, Beechwood is working with a few First Nations leaders on ways to better reflect the Indigenous experience and contributions under a program it calls Reconciling History.

The 14,000-square-foot Beechwood National Memorial Centre was officially opened in April 2008, complete with reception rooms, family meeting rooms and catering facilities. It also includes the Sacred Space, a striking nine-sided worship area made from wood and stone that was conceived through extensive consultations with local faith leaders and the Ontario Multi-Faith Council. No fewer than 27 different religious denominations participated in the services that marked the opening beneath its soaring sky-lit dome, including a smudging ceremony performed by the Sacred Fire Keeper of the Algonquin Nation.

“To walk through Beechwood Cemetery is to walk through a place of memory,” Michaëlle Jean said at the centre’s official launch. “To go back in time and retrace the footsteps of our predecessors, discover the dreams that inspired them. “Entire chapters of Canada’s history can be read right here beneath our feet.

There are people buried in this cemetery who built this country through sheer determination, conviction and courage.”

Top 5 Reasons to Preplan Your Funeral

1. You want to ease the burden on your family and loved ones.

- If your wishes are unknown when you die, they will be faced with making difficult decisions at a trying time. Will they know if you wish to be buried or cremated? Will they agree on an open or closed casket? Will they agree on how much to spend? Confusion and disagreements are common occurrences when there is no plan to follow. You can avoid this by leaving behind a plan.

2. You want your family to have the benefit of a meaningful funeral.

- A funeral is an important event for a grieving family. Psychologically, it provides a sense of closure and enables the family to begin the healing process. Families benefit emotionally and socially by honouring the lives of their loved ones with a fitting ceremony and by giving them a proper send off. It is difficult to make the funeral the best it can be when planning it in a short time.

3. You want your final wishes to be followed.

- If you have specific preferences for the disposition of your remains and the nature of your funeral services, you can clearly express them in your funeral plan. You may have a preference for burial or cremation, the epitaph on your headstone, or the music and readings at your funeral. Or you may not want a funeral ceremony. Whatever your wishes, they need to be set forth in your funeral plan.

4. You want to be self-reliant and have your affairs in order at the end of your life.

- Taking care of your funeral arrangements is a thoughtful and caring thing to do for your family. It is comforting to know that you have done all you can do to ease their burden. And you can be assured that they will appreciate that your caring for them continued after you are gone.

5. You want to assume the financial responsibility for your funeral.

- Planning ahead allows you to make financial arrangements to cover your funeral costs. Even if you are leaving behind sufficient money, will your survivors be able to access it? Preplanning provides you with sound financial planning options you can consider ahead of time.

Price Comparison	2013	2024
Funeral Professional Fee	\$ 5,540.00	\$ 7,655.00
Batesville Lynx (casket)	\$ 1,655.00	\$ 3,450.00
Taxes (HST)	<u>\$ 935.35</u>	<u>\$ 1,443.65</u>
Total	\$ 8,130.35	\$ 12,548.65

Difference: \$ 4,418.30

**Disbursements are not included in the comparison (burial permit, flowers, obituary in newspaper)*

6 **All prices are subject to change without notice*

Sts. Peter and Paul Melkite Catholic Church Community Service

This package includes 4 hours of visitation in the Sacred Space in the evening. The Funeral Service and final disposition occur on the following day. (Casket present*)

Professional Services and Consultation

Funeral Director Services	\$ 1,975.00
Documentation and Administration	\$ 595.00
Facilities for Shelter (up to 5 days)	\$ 395.00
Basic Preparation of Deceased	\$ 275.00
Professional Embalming Services Estate	\$ 625.00
Settlement Documents	Complimentary

Transportation (within 50 km)

Transportation of Deceased from Place of Death	\$ 525.00
Funeral Coach	\$ 595.00
Administration / Lead Vehicle	\$ 225.00

Staff, Equipment and Related Facilities

Staff Services for Visitation	\$ 845.00
Visitation Suite	N / A
Staff Services for Ceremony	\$ 685.00
Visitation with or without a Ceremony in Sacred Space	\$ 915.00

Total Traditions Package in the Sacred Space **\$ 7,655.00**

Batesville Lynx Casket* \$ 3,450.00

Total Traditions Package with Casket in the Sacred Space **\$ 11,105.00**

Your 15% Community Discount **-\$1,665.75**

Total Traditions Package in the Sacred Space with Discount **\$ 9,439.25**

**Please note you may chose any casket available at Beechwood.*

N.B. Supplies, stationery, cemetery, disbursements and taxes not included.

Discount only applicable on the items above mentioned. (not applicable for social service cases)

Dear Member;

Thank you for your interest in community sections at Beechwood Cemetery. These sections include St. Charbel Church, St. Elias Church, St. Peter & Paul Church and St. George and Antony Orthodox Churches.

Beechwood has a long history with the Arabic Community of Ottawa, serving the community for over 100 years. In 2004, Beechwood Cemetery, along with St. George and St. Antony Orthodox Church, entered into an agreement to set aside an area of the Cemetery for their parish.

The location is within Beechwood Section 110 and is known as the Stations of the Cross. Stations 2 and 3 were set aside and reserved for exclusive use of the parish. Containing more than 150 lots of varying sizes, these locations will be used for many generations of parish members.

To show our commitment to the community, we are offering:

- 15% off the purchase of interment rights (land)
- An addition 5% off for purchasing in advance of need
- An addition 5% off for full payment at time of signing.
- 15% off the purchase of monuments.

To further enhance our service commitment to the community, we will offer 15% off all funeral services and caskets for families from the Churches above, excluding disbursements (flowers, newspapers notice, clergy honorarium, coroner's certificate and municipal death registration).

Our rates will be reviewed and updated on an annual basis beginning January of each year but families will still enjoy nearly 25% off Beechwood's regular rates.

We look forward to serving the Arabic community for many generations to come. If you have any questions or concerns, please do not hesitate to contact us.

Thank you
Beechwood, Funeral,
Cemetery & Cremation Services

613-741-9530

Lots Prices and Discount Table

<u>Size</u>	<u>Regular price</u>	<u>Community Price</u>	<u>Preneed 1</u>	<u>Pre/ Paid-full2</u>
Single grave 3'x10' (3)	\$ 6,720.00	\$ 5,712.00	\$ 5,426.40	\$ 5,140.80
Single grave 4'x10'	\$ 8,845.00	\$ 7,518.25	\$ 7,142.33	\$ 6,766.42
Two grave 6'x10'	\$ 13,440.00	\$ 11,424.00	\$ 10,852.80	\$ 10,281.60
Three grave 9'x10'	\$ 20,160.00	\$ 17,136.00	\$ 16,279.20	\$ 15,422.40
Four grave 12'x10'	\$ 26,880.00	\$ 22,848.00	\$ 21,705.60	\$ 20,563.20

Monument Examples

All pricing* includes monument, base, foundation and care and maintenance. *15% discount already included in the price

Single Monuments for 3'x10':

Light Barre Grey monument, Steeled
22" x 6" x 28" -
Stanstead Grey base
24" x 12" x 8"



\$ 3,650.00 Plus HST

Single Monuments for 3'x10':

Jet Black monument, polished front and back
22" x 6" x 28" -
Stanstead Grey base
24" x 12" x 8"



\$ 4,650.00 Plus HST

Families will have to purchase an interment fee (burial of casket) at the time of need or they may pre pay this in advance of need. This first burial will be at extra depth to allow for a second burial at standard depth in the future.

Standard depth interment (excavation of grave at single depth) - \$ 1,580.00

Extra depth interment (excavation of grave at double depth) - \$ 1,940.00

*Excludes the BAO Consumer Protection Fee - \$ 30.00

Payment Policies for Funeral and Cemetery Services:

Frontline Financial Credit Union has partnered with Beechwood Funeral, Cemetery and Cremation Services to provide loans to our families for the purposes of paying funeral and/or cemetery expenses. Beechwood offers flexible financing and payment options to meet individual needs.

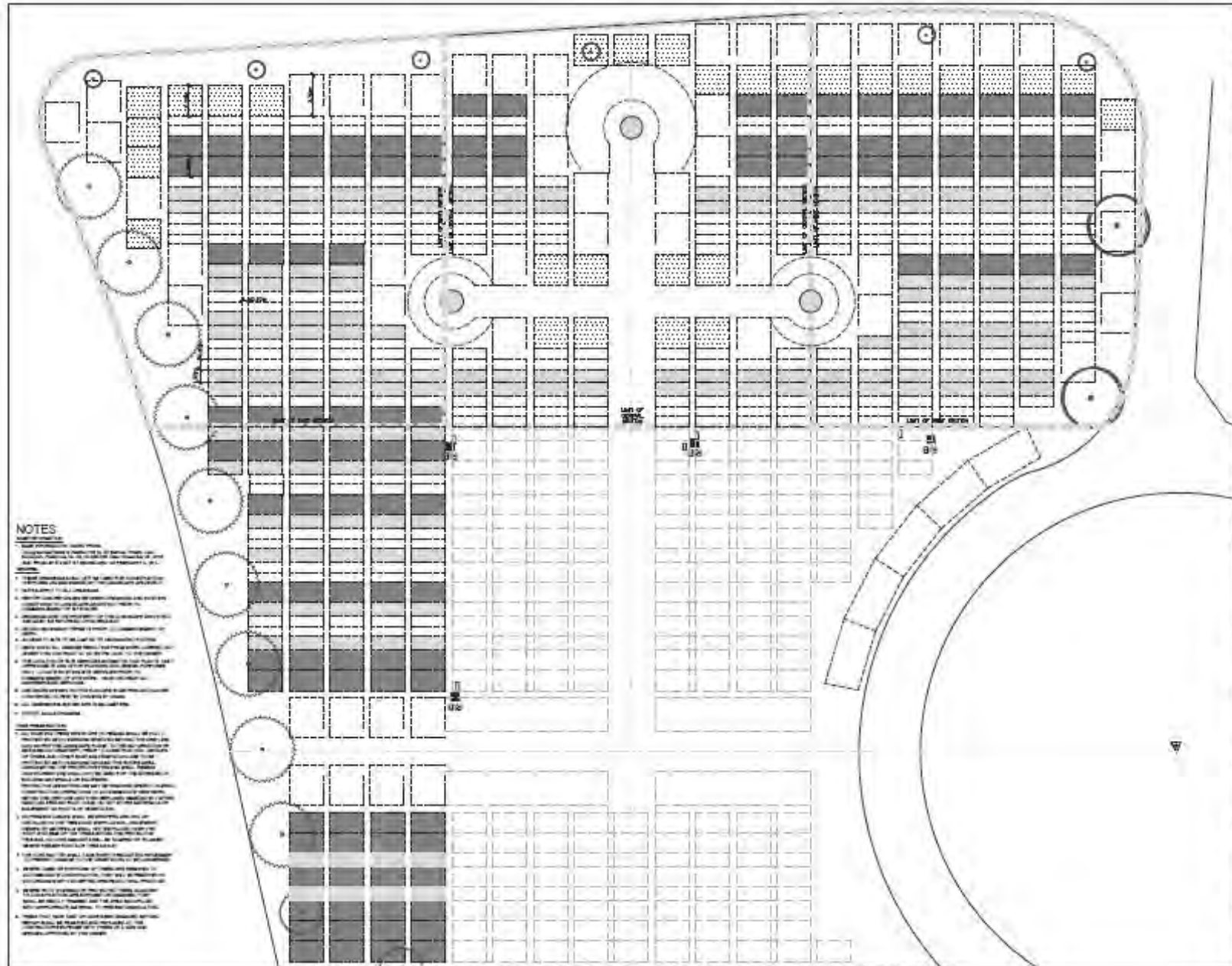
Conditions/Features:

- Loans are available from 1 to 15 years
- Loans are fully open and can be paid off any time without penalty
- Credit Union membership required - \$75 membershares
- Application fee of \$75 waived
- Must be less than 69 years of age to qualify for life insurance
- Pre-existing conditions - 6 months prior and 6 months after
- If joint life insurance coverage is purchased, the loan will be paid in full on the death of either applicant
- Life insurance coverage ends at age 76
- Life insurance premiums are not age banded and are reimbursed on a prorated basis if loan is paid out early
- Payments based on interest rate of 7.99%*, 5 year renewable term
- On approved credit, some conditions may apply

HST is applicable to all costs associated above. All pricing is not retroactive and cannot be applied to previous purchases. All group rates increase annually beginning the 1st day of January unless otherwise posted. * Loan rates and prices are subject to change.

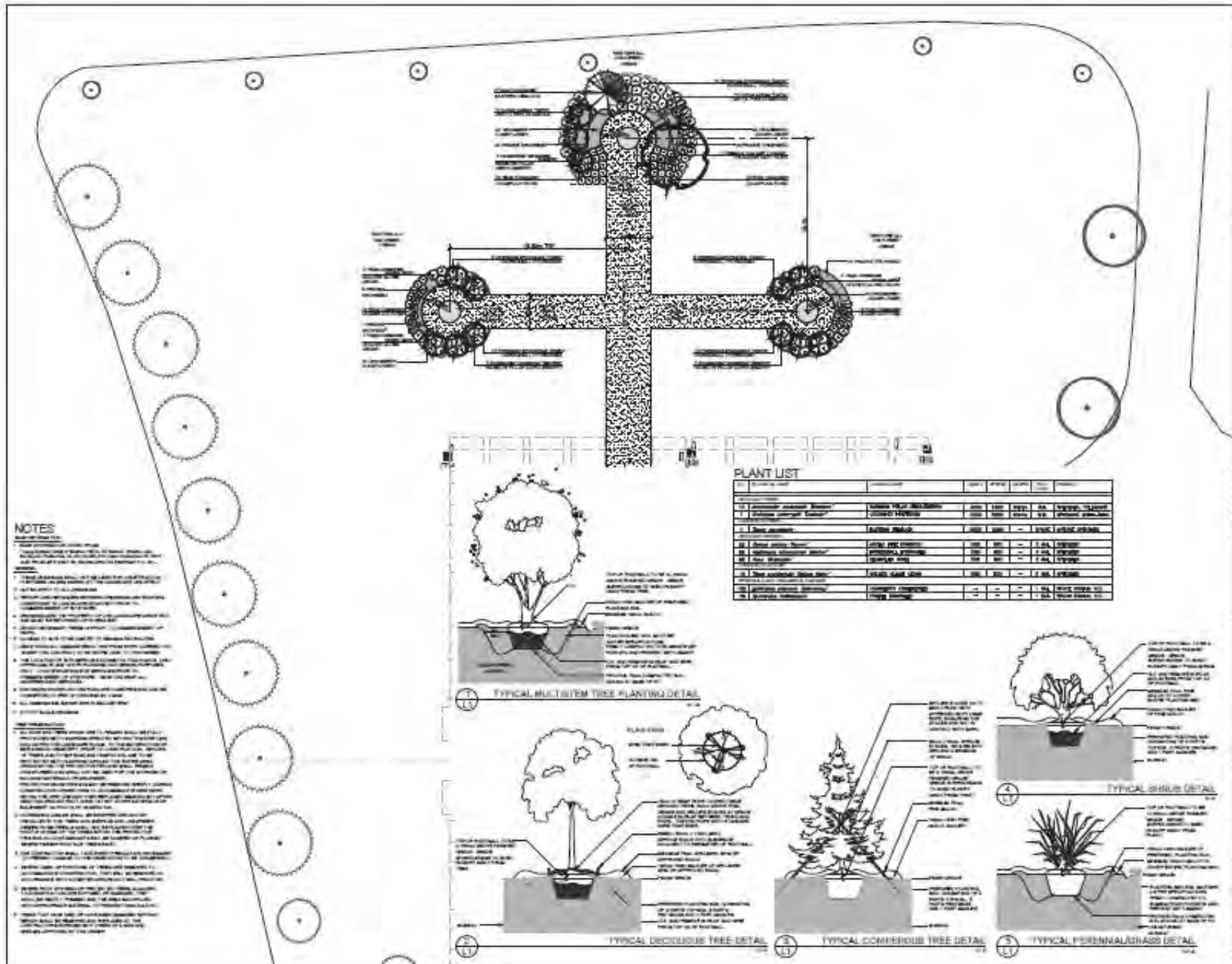
Sts. Peter and Paul Melkite Catholic Church

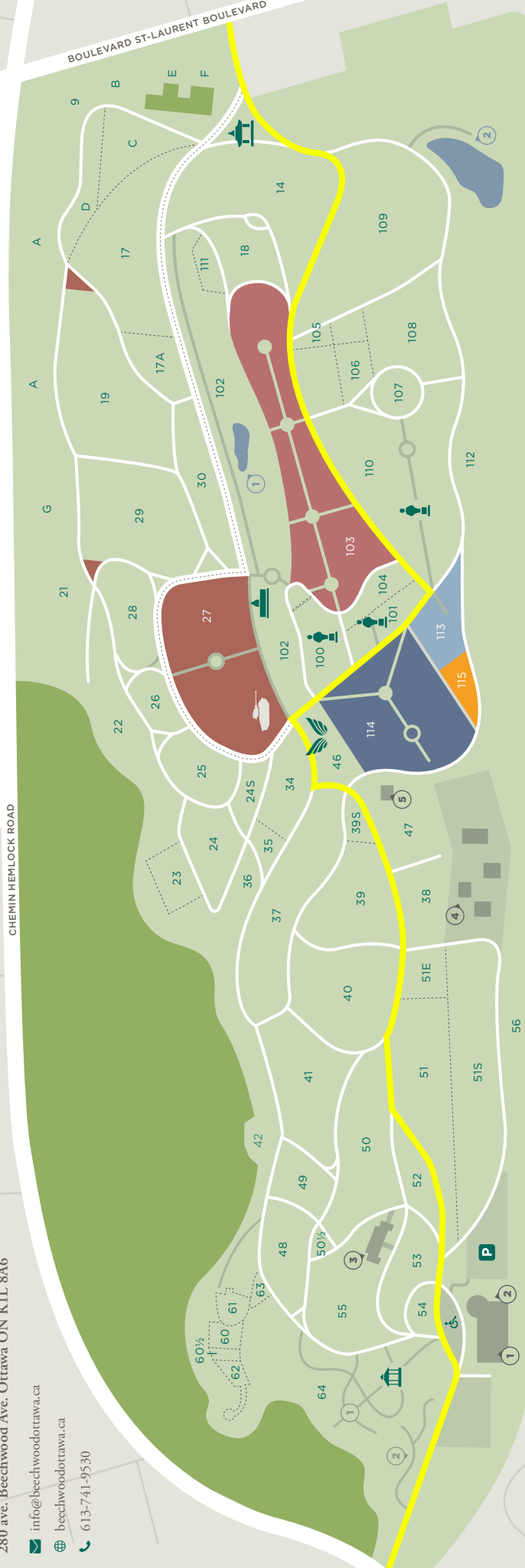
- New Community Section



Sts. Peter and Paul Melkite Catholic Church

- New Community Section





LEGENDE | LÉGENDE

LANDMARKS | INSTALLATIONS

- ① Beechwood National Memorial Centre
Centre commémoratif national Beechwood
- ② Sacred Space
Espace sacré
- ③ Mausoleum
Mausolée
- ④ Crematorium
Crématorium
- ⑤ Memorial Cross Building
L'immeuble de la Croix du souvenir

PATHWAYS | PARCOURS

- ① Botanical Cremation Gardens
Jardins botaniques pour crémation
- ② Poet's Hill
L'aire des poètes

MONUMENTS | MONUMENTS

- Tank
Char d'assaut
- Amicitia France Canada Monument
Monument Amicitia France Canada
- Garden of Angels
Jardin des anges
- Pagoda
Pagode
- Gazebo
Gazebo

WATERWAYS | COURS D'EAU

- ① Quarry
Carrière
- ② Macoun Marsh
Marais Macoun
- SECTION 100 | SECTION 100
St. Charbel
Saint-Charbel
- SECTION 101 | SECTION 101
Our Lady of Fatima
Notre Dame de Fatima
- SECTION 110 | SECTION 110
Élisabeth Bruyère Monument
Monument Élisabeth-Bruyère

COMMUNITIES | COMMUNAUTÉS

- National Military Cemetery
Cimetière national militaire
- SECTION 27 | SECTION 27
Veterans Section
Section des Anciens Combattants
- SECTION 113 | SECTION 113
Ottawa Police Service Memorial Cemetery
Cimetière commémoratif du Service de police d'Ottawa
- SECTION 114 | SECTION 114
RCMP National Memorial Cemetery
Cimetière commémoratif national de la GRC
- SECTION 115 | SECTION 115
CSIS National Memorial Cemetery
Cimetière commémoratif national du SCRS

ROUTES | ROUTES

- Yellow Line | Ligne Jaune
- White Line | Ligne Blanc
- Pathways | Parcours
- Roads | Routes
- Sections | Sections
- Parking | Stationnement
- Off-Property Roads | Routes hors propriété